

MATCH LINE STA. 73+00

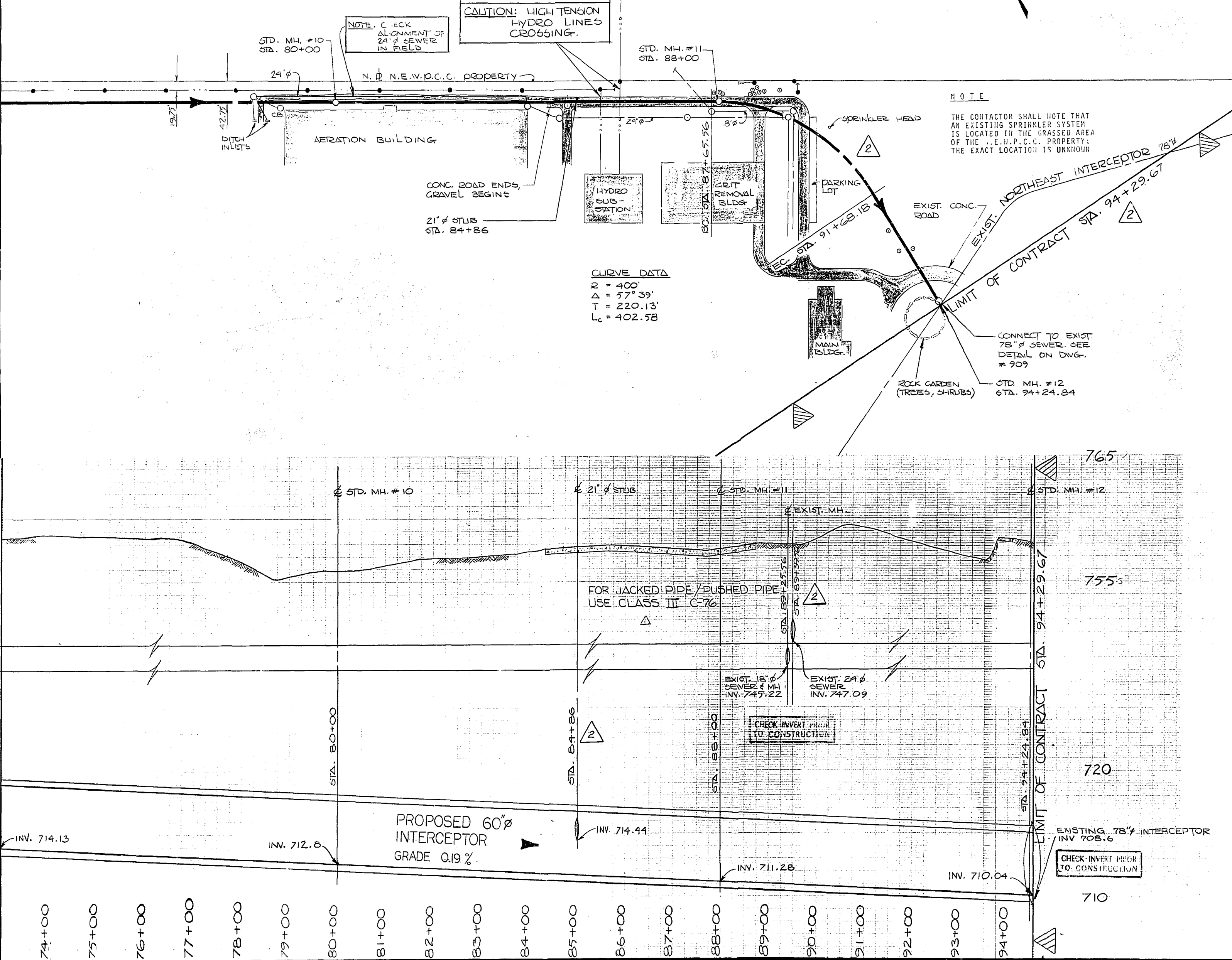
MATCH LINE STA. 73+00

765

755

720

710



LEGEND

WATERWORKS, WASTE AND DISPOSAL; UNDERGROUND UTILITIES

PROPOSED FORCEMAIN, INTERCEPTOR OR SECONDARY SEWER ————

EXISTING FORCEMAIN, INTERCEPTOR OR SECONDARY SEWER ———— W.W.D. 24" SEWER

PROPOSED FEEDERMAIN ————

EXISTING FEEDERMAIN ———— W.W.D. 24" W.M.

W.W.D. — WATERWORKS, WASTE AND DISPOSAL

OTHER UNDERGROUND UTILITIES

COMMUNITY SEWER ————

COMMUNITY WATERMAIN ————

GAS ————

HYDRO DUCT ————

M.T.S. DUCT OR CABLE ————

STREET LIGHTING, RAILWAY SIGNAL OR TRAFFIC SIGNAL CABLE ————

SURFACE UTILITIES

COMMUNITY BOUNDARY LINE ————

FENCE LINE ———— X ———— X

POLE LINE ————

RAILWAY LINE ————

MISCELLANEOUS SYMBOLS

CATCH BASIN ———— ○

CULVERT ———— []

HYDRANT ———— ⊕

MANHOLE ———— ○

HYDRO OR M.T.S. POLE ———— ●

LAMP STANDARD ———— ⊕

RAILWAY OR TRAFFIC SIGNAL STANDARD ———— ⊕

SURVEY BAR ———— ■

TREE ———— ⊙

VALVE ———— ⊗

DIRECTION OF FLOW

NOTES

LOCATION OF UNDERGROUND STRUCTURES SHOWN ARE BASED ON BEST INFORMATION AVAILABLE, BUT NO GUARANTEE IS GIVEN THAT ALL EXISTING UTILITIES ARE SHOWN AND EXACT LOCATION OF ALL UNDERGROUND INCLUDING SERVICE CONNECTIONS MUST BE CHECKED WITH UTILITIES CONCERNED BEFORE PROCEEDING WITH CONSTRUCTION.

NO.	DESCRIPTION	DATE	BY
1	REVISED CHAINAGE @ CURVE @ 21" STUBS 23-9-77 LAN.		
2	REVISED CLASS OF JACKED/PUSHED PIPE 29-7-77 M.S.		

REVISIONS

FIELD BOOK(S) NO. F-398, F-420, F-473	SURVEYED BY D.M.G.
LAND SURVEY PLAN(S) NO. 13147	DATE MAR. 29, 1977
B. M.	NOV. 8, 1974

The City of Winnipeg
Waterworks, Waste and Disposal Division

ENGINEERING BRANCH
WASTE DISPOSAL

**NORTHWEST INTERCEPTOR
LEILA TO N.E.V.P.C.C.**

**SECTION 'B' - BERGEN CUTOFF RD.
TO N.E.V.P.C.C.**

STA. 73+00 TO STA. 94+45.71

DESIGNED BY [Signature]	DRAWN BY L.A.N.
CHECKED BY [Signature]	DATE July 5, 1977
APPROVED BY [Signature]	

SCALE: HOR. - 1" = 100'
VERT. - 1" = 4'-0"

DRAWING NO. 908